

Think Motion | Think AEC



Ball & Roller Bearings





Profile

AEC is the manufacturer of the widest range of rolling element bearings in a single plant in India without any domestic or foreign collaboration.

Founded by five technocrats as a partnership firm, AEC started manufacturing needle roller assemblies in 1973. Today, AEC has grown into a public limited company manufacturing a wide array of high quality bearings and their components.

AEC has -

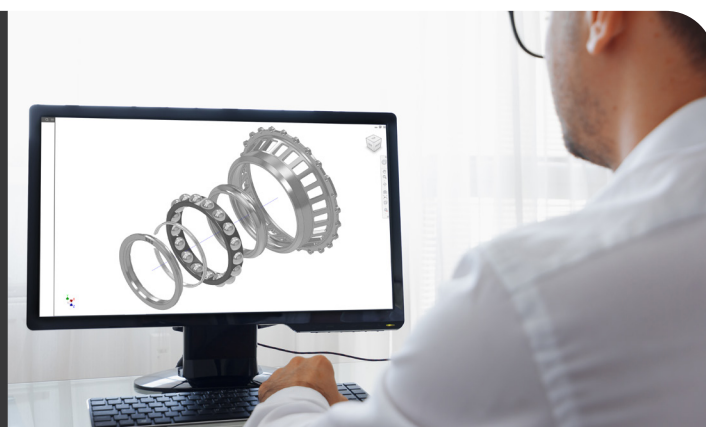
- over 4 decades of manufacturing excellence and innovation
- ISO 16949, ISO 9001, ISO 14001, ISO 18001 certifications
- customer base across 4 continents
- wide range of product applications including aerospace

AEC Advantage

AEC provides perfect solutions to the demand for top quality, precision engineered bearings with superior engineering, extensive knowledge of applications & fitments, wide range of products, and global delivery network.

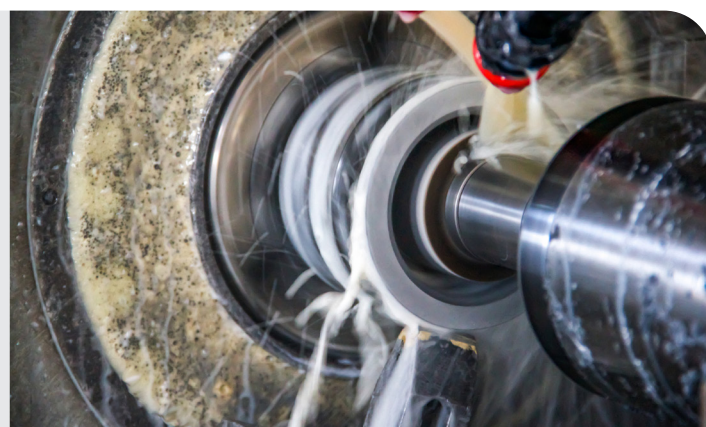
Fast Development

AEC can quickly and cost-effectively deliver custom and innovative solutions for special applications that meet or exceed industry standards.



Flexible Manufacturing

With our unique setup, we can manufacture a wide range bearings in one plant and quantity is not a constraint for developing or manufacturing.



Short Lead times

Our rapid development and flexible manufacturing helps us minimize idle times and offer comparatively shorter lead-times.



Quality

AEC bearings are engineered using professional CAD and 3D modelling & analysis tools backed by our years of experience. Our products are made from high quality steel from industry approved vendors with optimum dimensional stability. Geometries and profiles are in accordance with international standards for best performance.

Our metrology facility uses the finest gauges and instruments to critically follow the material at every stage of manufacturing. Our investment in the areas of testing, measuring, and high quality technical training of our employees along with input from our customers has resulted in manufacturing highest quality bearings.



Quality Assurance Through

- commitment and investment in innovation
- facilities for measuring, monitoring, and improving process performance including PPAP & FAI
- well entrenched HR program with excellent training
- customer input throughout product life cycle



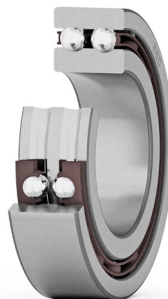
ISO/TS 16949:2009
ISO 9001:2008
ISO 14001:2004
OHSAS18001:2007
www.tuv.com
ID 9105071022

Ball Bearings

Deep Groove Ball Bearings



Single Row



Double Row



Wide Row

Series	6000	INS 6200	16000	XLS
	6200	INS 6300	61700	XLJ
	6300		61800	RLS
	6400		61900	RMS

4200
4300

W 200
W 300

Cages | Steel · Brass · Polyamide

Steel · Brass · Polyamide

Steel · Brass · Polyamide

Self Aligning Ball Bearings



Series	1200	2200	RL
	1300	2300	RM
	1400		

Cages | Steel · Brass · Polyamide

Ball Bearings

Angular Contact Ball Bearings



Single Row



Double Row



Four Point Contact

Series	<table border="0"> <tr><td>7000</td><td>71800</td><td>XLT</td></tr> <tr><td>7200</td><td>71900</td><td>ALS</td></tr> <tr><td>7300</td><td></td><td>AMS</td></tr> <tr><td>7400</td><td></td><td></td></tr> </table>	7000	71800	XLT	7200	71900	ALS	7300		AMS	7400		
7000	71800	XLT											
7200	71900	ALS											
7300		AMS											
7400													
Cages	Steel · Brass · Polyamide · Phenolic												

Series	<table border="0"> <tr><td>3200</td></tr> <tr><td>3300</td></tr> <tr><td>5200</td></tr> <tr><td>5300</td></tr> </table>	3200	3300	5200	5300
3200					
3300					
5200					
5300					
Cages	Brass · Polyamide				

Series	<table border="0"> <tr><td>QJ 200</td><td>QL</td></tr> <tr><td>QJ 300</td><td>QJL</td></tr> <tr><td></td><td>QJM</td></tr> </table>	QJ 200	QL	QJ 300	QJL		QJM
QJ 200	QL						
QJ 300	QJL						
	QJM						
Cages	Steel · Brass · Polyamide · Phenolic						

Thin Section Ball Bearings



Deep groove



Angular contact



Four Point Contact

Series	<table border="0"> <tr><td>KD CPO</td></tr> <tr><td>KF CPO</td></tr> <tr><td>KG CPO</td></tr> </table>	KD CPO	KF CPO	KG CPO
KD CPO				
KF CPO				
KG CPO				
Cages	Steel · Brass			

Series	<table border="0"> <tr><td>KD ARO</td></tr> <tr><td>KF ARO</td></tr> <tr><td>KG ARO</td></tr> </table>	KD ARO	KF ARO	KG ARO
KD ARO				
KF ARO				
KG ARO				
Cages	Steel · Brass			

Series	<table border="0"> <tr><td>KD XPO</td></tr> <tr><td>KF XPO</td></tr> <tr><td>KG XPO</td></tr> </table>	KD XPO	KF XPO	KG XPO
KD XPO				
KF XPO				
KG XPO				
Cages	Steel · Brass			

Ball Bearings

Thrust Ball Bearings



Single Direction



Double Direction



Full Complement

Series

51100	51100	53200
51200	51200 U	53300
51300	51300 U	53200 U
51400	51400 U	53300 U

52100	54200	52300 U
52200	54300	52400 U
52300	52100 U	54200 U
52400	52200 U	54300 U

D

Cages

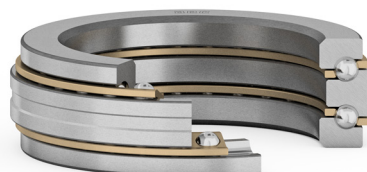
Steel · Brass

Steel · Brass

Angular Contact Thrust Ball Bearings



Single Direction



Double Direction

Series

Contact us for available products

Contact us for available products

Cages

Brass

Brass

Roller Bearings

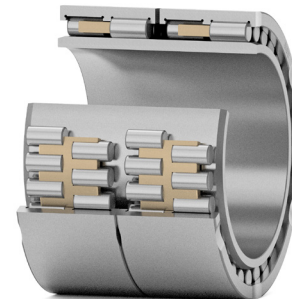
Cylindrical Roller Bearings



Single Row



Double Row



Four Row

Series	N	NF	CRL	XLRJ
	NU	NCF	CRM	LSL
	NJ	CFL	LLRJ	
	NUP	CFM	LLRM	

NN	NNCF
NNU	
NNC	
NNCL	

Contact us for available products

Cages	Steel · Brass · Polyamide			
-------	---------------------------	--	--	--

Brass

Brass

Needle Roller Bearings



Complete Bearing



Without Inner Ring



Inner Ring Only

Series	NA	AB/LRB
	NKI	HJ/IR
	NKIS	AMS

NK	MR
NKS	
RNA	

IR
MI

Cages	Steel	
-------	-------	--

Steel

Roller Bearings

Tapered Roller Bearings



Single Row



Double Row



Four Row

Series	30000	39000	M	E
	31000	L	MH	J
	32000	LL	H	
	33000	LM	HH	
	Cages		Steel	

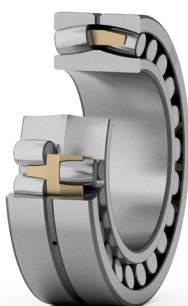
TDI
TDO

TQI
TQO

Steel

Steel

Spherical Roller & Plain Bearings



Spherical Roller Bearing



Spherical Plain Bearing

Series	20200	22200	23200
	20300	22300	24000
	21200	23000	24100
	21300	23100	
	Cages		Steel · Brass

GE
GEH

Roller Bearings

Crossed Roller Bearings



Cylindrical Crossed Roller

Series

Contact us for available products

Cages

Brass Spacers



Tapered Crossed Roller

Contact us for available products

Steel Spacers

Flexible Roller Bearings



Series

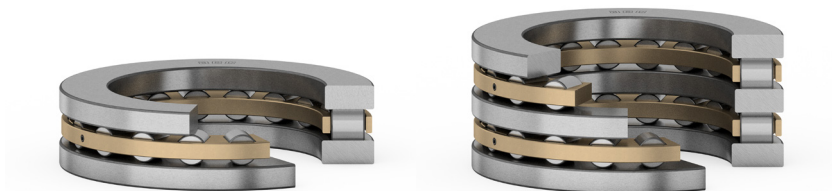
FL
FLW
45200
45500

Cages

Steel

Roller Bearings

Cylindrical Roller Thrust Bearings



Single Direction

Double Direction

Series

81100	87400
81200	T
89300	AT
89400	

81100	87400
81200	T
89300	AT
89400	

Cages

Steel · Brass

Steel · Brass

Tapered Roller Thrust Bearings



Single Direction

Double Direction

Series

N
T

Contact us for available products

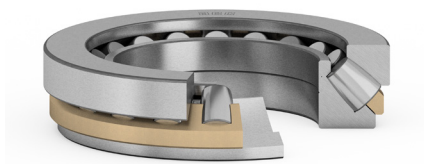
Cages

Steel · Brass

Steel · Brass

Roller Bearings

Spherical Roller Thrust Bearings



Single Direction

Series	29200 29300 29400
Cages	Steel · Brass

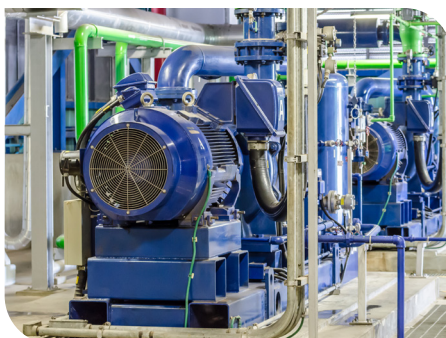
Axial Radial Bearings



Series	Contact us for available products
Cages	Brass

Customers

At AEC, we are committed to customer satisfaction through fast development, cutting edge engineering, and manufacturing to maximize performance and reduce costs. We welcome our customers' involvement during development and production to deliver products that meet or exceed their requirements.



Locations



Headquarters & Plant

Village - Patla, Taluka - Bhesan
Junagadh 363030, Gujarat
INDIA

+91 2873 252223
+91 2873 252268
sales@aec.com

AEC Europe SRL

viale Lombardia 51/53
20861 Brugherio (MB)
ITALY

+39 039 879816
info@aeceurope.it

AEC GmbH

Athenstraße 8
97424 Schweinfurt
GERMANY

+49 9721 29740 00
verkauf@aec.gmbh

AEC USA

12600 Deerfield Pkwy
Suite 100
Alpharetta, GA 30004
USA

+1 678 799 7880
aec-usa@aec.com

